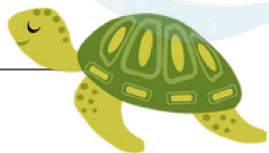


KAISER PERMANENTE SAN RAFAEL MEDICAL CENTER



PGY-1 Pharmacy Residency Program

Accredited by ASHP

LOCATION

- Explore a variety of good eats and local events in Marin County
- Experience panoramic views of the Bay Area from Mount Tamalpais
- Enjoy Sonoma and Napa Valley's award-winning wineries
- Unwind on the sandy beaches at the Point Reyes National Seashore
- Take a scenic stroll or bike ride along the beautiful coast of Sausalito
- Conveniently access nearby attractions, dining, nightlife, arts, and culture in San Francisco

QUALIFICATIONS

- Doctor of Pharmacy graduate from an ACPE-accredited pharmacy school
- Valid California Intern Pharmacist License by July 1, 2024
- Valid California Pharmacist License by October 1, 2024
- Registration in the NMS & ASHP Resident Matching Program
 - **Program NMS Code: 130713**
 - **ASHP Program Code: 92006**
- Visit our website for application requirements
 - Applications must be submitted via PhORCAS by January 2, 2024

CONTACT US

Bryan Sandlund, PharmD

Clinical Pharmacy Director
Residency Program Director
bryan.k.sandlund@kp.org
(415) 492-6354

Stephanie Hanton, PharmD, APh

Drug Education Coordinator
Residency Program Coordinator
stephanie.hanton@kp.org
(415) 492-6376

An Tran, PharmD

PGY-1 Pharmacy Resident
an.b.tran@kp.org

Emily Tran, PharmD

PGY-1 Pharmacy Resident
emily.l.tran@kp.org

Jenny Chen, PharmD

PGY-1 Pharmacy Resident
jenny.diep@kp.org



✓ DATES TO REMEMBER

- **Fall 2023, Dates TBD:** Virtual open house (see National website for updates)
- **January 2, 2024:** Application due on ASHP PhORCAS
- **Week of February 12th, 2024:** Virtual residency interviews
- **March 2024:** Residency Match results

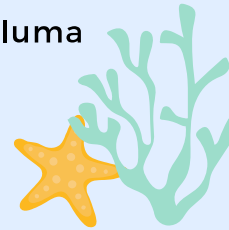
For More Information:

pharmacyresidency.kaiserpermanente.org



ABOUT KAISER SAN RAFAEL MEDICAL CENTER

- 116 bed hospital serving Marin and Sonoma Counties
- 8 medical office buildings located in San Rafael, Novato, and Petaluma
- Providing care for over 140,000 Kaiser Permanente members
- Joint Commission-certified stroke center
- Commission On Cancer accredited center
- Rated one of North Bay Business Journal's "Best Places to Work"



CORE ROTATIONS

- Acute Care & Critical Care Medicine**
- Inpatient Pharmacy Practice*
- Outpatient Pharmacy Practice*
- Medication Use Quality Improvement Project^

Rotation Duration: ^2 weeks | *4 weeks | **6 weeks

ELECTIVE ROTATIONS

- Asthma & Erythropoietin Management*
- Cardiovascular Chronic Conditions Management (PHASE)**
- Chronic Pain*
- Drug Use Management*
- Geriatric Medicine*
- Heart Failure*
- HIV PrEP and Latent TB*
- Hypertension Management*
- Oncology and Infusion**
- Osteoporosis/Fracture Prevention*
- Psychiatry*
- Transitional Care Pharmacy (TCP)**

Rotation Duration: *4 weeks | **6 weeks

LONGITUDINAL EXPERIENCES

- Emerging Therapeutics Strategy Program MUE*
- Practice Management and Leadership**
- Residency Project**

Rotation Duration: *36 weeks | **52 weeks

